

## Elab Fluor® 647 Anti-Human/Monkey/Mouse Integrin $\beta$ 7 Antibody[FIB504]

Catalog Number: AN00571M

**Note:** Centrifuge before opening to ensure complete recovery of vial contents.

### Description

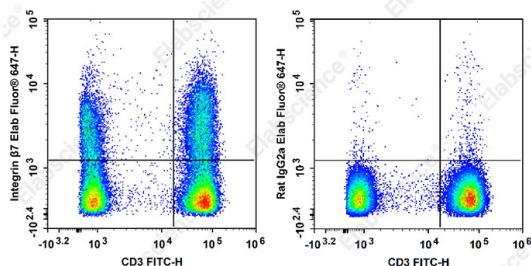
<b>Reactivity</b>	Human;Rhesus;Mouse
<b>Host</b>	Rat
<b>Isotype</b>	Rat IgG2a, $\kappa$
<b>Clone No.</b>	FIB504
<b>Isotype Control</b>	Elab Fluor® 647 Rat IgG2a, $\kappa$ Isotype Control[2A3] [Product E-AB-F09832M]
<b>Conjugation</b>	Elab Fluor® 647
<b>Conjugation Information</b>	Elab Fluor® 647 is designed to be excited by the Red laser (627-640 nm) and detected using an optical filter centered near 670 nm (e.g., a 660/20 nm bandpass filter).
<b>Storage Buffer</b>	Phosphate buffered solution, pH 7.2, containing 0.09% stabilizer.

### Applications

### Recommended usage

<b>FCM</b>	Each lot of this antibody is quality control tested by flow cytometric analysis. <b>The amount of the reagent is suggested to be used 5 <math>\mu</math>L of antibody per test (million cells in 100 <math>\mu</math>L staining volume or per 100 <math>\mu</math>L of whole blood).</b> Please check your vial before the experiment. Since applications vary, the appropriate dilutions must be determined for individual use.
------------	--

### Data



Staining of normal human peripheral blood cells with Elab Fluor® 647 Anti-Human/Monkey/Mouse Integrin  $\beta$ 7 Antibody[FIB504] (filled gray histogram) or Elab Fluor® 647 Rat IgG2a,  $\kappa$  Isotype Control (empty black histogram). Cells in the lymphocytes gate were used for analysis.

### Preparation & Storage

<b>Storage</b>	Keep as concentrated solution. This product can be stored at 2-8°C for 24 months. Please protected from prolonged exposure to light and do not freeze.
<b>Shipping</b>	Ice bag

### Antigen Information

<b>Alternate Names</b>	VI 6T-101;VI A024;Integrin Beta7;IntegrinBeta7;Integrin B7;IntegrinB7
<b>Uniprot ID</b>	P26010,P26011
<b>Gene ID</b>	369516421

### For Research Use Only

## Background

Integrin  $\beta 7$  is a 130 kD glycoprotein also known as integrin  $\beta p$ . It is a member of the Ig superfamily. In association with integrin  $\alpha 4$  or  $\alpha E$  chain,  $\beta 7$  forms  $\alpha 4/\beta 7$  or  $\alpha E/\beta 7$  heterodimer.  $\alpha 4/\beta 7$  (CD49d/ $\beta 7$ , LPAM-1) is expressed on the majority of peripheral lymphocytes, on small subsets of thymocytes, and bone marrow progenitors. LPAM-1 binds to several ligands, VCAM-1, MAdCAM-1 and fibronectin, and is involved in lymphocyte adhesion and some hematopoietic progenitor cells migration.  $\alpha E/\beta 7$  (CD103/ $\beta 7$ ,  $\alpha IEL/\beta 7$ ) is expressed on intestinal intraepithelial lymphocytes (IEL), dendritic epidermal T cells, T regulatory cells, a subset of CD8+ T cells in lymph nodes and lamina propria. CD103/ $\beta 7$  complex is thought to play a role in lymphocyte retention via interaction with its ligand E-Cadherin.